

## Dow Corning® brand Contractors Concrete Sealant and Contractors Weatherproofing Sealant

If you think 60 years of proven silicone performance is too pricey for projects like yours ...

take a look at *these*  
silicone sealants.



*"We use CCS on tilt-up windows and doors and CWS for general-purpose applications like finish perimeter beads. Both products are **relatively inexpensive**, are very **high-quality** and have great colorfastness. A lot of times, guys in the field tend to be resistant to new products; but my crew **immediately liked the field application characteristics** of CCS and CWS. My superintendent really likes them because they have **long tooling times** and good workability. For me, I like the **great adhesion** to unprimed substrates, the high quality of the product and the price. When CCS was first introduced, I saw an immediate opportunity to use it for restoration work: it's very **cost-effective** compared to urethane, has a much **longer service life** and has great color retention. Both CCS and CWS are great finish caulks; they **look great** and are **far superior** to urethane."*

**Alex Rojas**

Owner and President  
Tru-Proof, Inc.  
Miami, Florida, USA

*"We install over a million feet per year ... our bread and butter is tilt-up windows. We just started using both CCS and CWS about six months ago and began prep-ping our customers for the change six months before that. We tested both products thoroughly and are **very happy with the results**. They're great for customers who don't need the 20-year warranty that comes with Dow Corning's premium sealants. And the price is **absolutely competitive with urethane**. I have recommended CCS and CWS **over urethane** on projects because I felt they would **perform better**."*

**Kal Zam**

Owner  
F.J. Zam Company  
Santa Fe Springs, California, USA

# Because budgets are tight and your reputation is on the line.

Whether you're an architect, specifier or contractor, the last thing you want is a dissatisfied building owner with a sealant-failure callback. But money's an issue. So you choose urethane over silicone and you hope for the best. Before very long, that cost-cutting urethane sealant hardens, chinks, cracks or reverts to its uncured state and loses adhesion. The building begins to leak and has to be resealed at a cost that is four to ten times greater than the original sealant installation. What's worse, your reputation for quality work is compromised.



*After 100 days (2,400 hours) of UV exposure in accelerated weathering and heat stability tests, the urethane sealant deteriorates, while the silicone sealant remains untouched.*

## Don't compromise. Proven silicone sealant performance is now available at a urethane-competitive price.

Cartridge for cartridge, sausage for sausage, gallon for gallon, **Dow Corning Contractors Concrete Sealant (CCS) and Dow Corning Contractors Weatherproofing Sealant (CWS) now cost no more than many urethanes.** And, while the price is competitive, the performance is far superior, so you can rest assured that you're giving your clients the best possible return on their investment.

Dow Corning® brand silicone sealants are the industry standard for long-term weatherproofing performance. They:

- Are inherently water-repellent,
- Remain flexible over a wide temperature range,
- Are virtually unaffected by ultraviolet (UV) light, ozone, snow and rain,
- Maintain adhesion even while being stretched or compressed,





- Will not chalk, crack or split the way organic sealants do,
- Are formulated specifically to resist tearing, and
- Have a life expectancy that is typically *three times longer* than the life expectancy of organic materials used in the same applications.

## Sealants designed for the structures you're building and sealing today.

Dow Corning developed CCS and CWS to meet the specific performance requirements of small- to mid-size commercial building projects, such as schools, churches, warehouses, strip malls, and low-rise apartment buildings, condominiums and office complexes.

These sealants are suitable for both new and remedial applications and are especially valuable for resealing buildings where urethane sealants have failed.

*"Many buildings are still spec'd with urethane, and we will often ask for a change to CCS. Like anybody, we're in business to stay in business. With Dow Corning CCS, it's a no-brainer. Who wouldn't want to use a product that does the job better and costs less?"*

**Laurence Cote,**  
Owner, Bradcan Caulking & Restoration, Inc.  
Edmonton, Alberta, Canada



AV04556



AV06606



AV07278

### Dow Corning Contractors Concrete Sealant (CCS)



- One-part, neutral-cure, 100% silicone
- Low-modulus; minimal bondline stress
- $\pm 50\%$  movement capability; handles thermal expansion and contraction with ease
- Outstanding unprimed adhesion to concrete and masonry, including brick
- Ideal for sealing building joints that experience extreme movement, including tilt-up and other concrete and masonry wall joints, and Exterior Insulation and Finish System (EIFS) joints

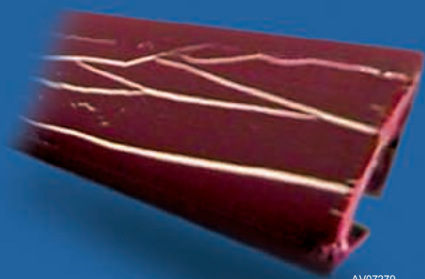
### Dow Corning Contractors Weatherproofing Sealant (CWS)



- One-part, neutral-cure, 100% silicone
- Medium-modulus; balanced adhesive strength with good recovery
- $\pm 40\%$  movement capability
- Unprimed adhesion to EIFS and many nonporous substrates, including glass and aluminum
- Excellent for sealing dynamically moving joints and EIFS, and for frame-to-structure and perimeter weathersealing

AV04943

## THE TRUTH ABOUT SEALANT PAINTABILITY.



Laboratory photo  
of painted urethane  
sealant after 40%  
extension.

AV07279

While silicone sealants are known for their long life and superior weather resistance, urethane sealants have a reputation for paintability. Unfortunately, if the paint lacks the sealant's movement capability, it's doomed to crack, peel and fall off as the sealant expands and contracts in response to changing temperatures.

Not only does cracking, peeling paint look bad, it also exposes the sealant underneath to the sun's damaging UV rays. For silicone sealants, UV exposure isn't a problem. But when urethane sealants are exposed to UV radiation, they quickly begin to degrade, increasing the likelihood of a leaking building, a dissatisfied owner and a costly callback or latent-defect issue.

Luckily, there is an alternative application method being used successfully countrywide to overcome paintability concerns. It's called "Paint and Seal," and it enables you to both paint your substrate *and* seal it with a long-lasting, weather-resistant silicone.

You simply paint the building *before* you seal it. Application details are available online at

**urethanebusters.com**

AV04557

## Benefits that extend well beyond our competitive price.

### LOWER INSTALLED COST – LONGER SERVICE LIFE.

Installed, *Dow Corning* CCS and CWS might cost you even *less* than urethanes. That's because less sealant is required. The width-to-depth ratio for silicones is 2:1 vs. 1:1 for urethanes. Another cost saver is the range of primerless options the two products represent. CCS and CWS can save you both time and money.

Silicones from *Dow Corning* also cost substantially less to use over time because they have to be replaced less often. This point is especially important to building owners and facility managers, who are very concerned, not only about what a particular material is going to cost them today, but what it could *potentially* cost them in the future if it fails and has to be replaced or repaired.

### POPULAR COLOR CHOICES. NO-MIX CONVENIENCE.

*Dow Corning* CCS comes in seven standard colors (white, gray, aluminum, charcoal, black, bronze, precast white). *Dow Corning* CWS comes in 20 standard colors (white, limestone, gray, window bronze, sandstone, aluminum, antique white, charcoal, black, bronze, precast white, off-white, ivory, buff, mountain fog, anodized aluminum, sandalwood, geographic beige, redwood tan, light bronze) and 19 additional special colors. Custom colors are available as well.

Plus, you can use *Dow Corning* CCS and CWS, as supplied, right out of the pail. No color packs to add. No mixing. No mess.

For more information and availability, contact your *Dow Corning* representative or distributor, or visit **urethanebusters.com**.



AV08949

## ALL-WEATHER PERFORMANCE AND GUNNABILITY.

Urethanes are fair-weather materials. The colder it gets, the less flexible they become. *Dow Corning* CCS and CWS, on the other hand, maintain their flexibility in both high- and low-temperature environments.

Urethanes also get stiff and hard to apply in cold weather, while CCS and CWS gun easily from -20 to 120°F with good initial adhesion and green strength. That means construction crews can keep moving forward, on time and on budget year round.

## FAST TACK-FREE TIME.

Some urethanes remain tacky for 24 hours or more. But *Dow Corning* CCS and CWS are generally tack-free in an hour or less, reducing the likelihood of dirt pickup.

## WEATHERPROOFING SPECIFICATIONS.

To make silicone sealants from *Dow Corning* easier to specify, *Dow Corning* has prepared specifications, which are also available electronically. For a comprehensive specifications binder, downloadable files or specs on CD, go to [urethanebusters.com](http://urethanebusters.com) or contact your *Dow Corning* sales representative or distributor.

## WARRANTED PEACE OF MIND.



*Dow Corning* backs CCS and CWS with a 5-Year Weatherseal Limited Warranty. So, whether you're an architect, specifier or contractor, you can recommend and use these sealants with confidence.



AV07262



AV07263

## The choices you need.

*Dow Corning* CCS and CWS are designed to give you higher-performing, economical silicone alternatives to urethane sealants in small- to mid-size building projects.

- If you need high movement and primerless adhesion to concrete or masonry, including brick, choose *Dow Corning* Contractors Concrete Sealant (CCS).
- If you need good movement and primerless adhesion to EIFS or nonporous substrates including glass and aluminum, choose *Dow Corning* Contractors Weatherproofing Sealant (CWS).

*If you're working on a high-profile building with special movement, structural glazing, aesthetic or long-term warranty needs, or if you need extensive technical support, consider one of *Dow Corning's* premium silicone sealants.*



Dow Corning gives you choices. This table will help you decide which product is right for you.

	<i>Dow Corning</i> Contractors Concrete Sealant (CCS)	<i>Dow Corning</i> Contractors Weatherproofing Sealant (CWS)	<i>Dow Corning</i> ® 756 SMS Building Sealant	<i>Dow Corning</i> ® 790 Silicone Building Sealant	<i>Dow Corning</i> ® 791 Silicone Weatherproofing Sealant	<i>Dow Corning</i> ® 795 Silicone Building Sealant
Recommended Use	Economical, high-performance weatherproofing	Economical, high-performance weatherproofing	Premium weatherproofing for aesthetically sensitive substrates	Premium weatherproofing	Premium weatherproofing	Premium structural glazing, glazing, weatherproofing
Description	One-part, <b>low-modulus</b> , neutral-cure, 100% silicone sealant	One-part, <b>medium-modulus</b> , neutral-cure, 100% silicone sealant	One-part, <b>medium-modulus</b> , neutral-cure, 100% silicone sealant	One-part, <b>ultra-low modulus</b> , neutral-cure, 100% silicone sealant	One-part, <b>medium-modulus</b> , neutral-cure, 100% silicone sealant	One-part, <b>medium-modulus</b> , neutral-cure, 100% silicone sealant
Key Features	High movement capability; low bondline stress; outstanding unprimed adhesion to most porous substrates, including concrete block, poured and precast concrete, tilt-up concrete, brick, mortar, grout, plaster and ceramic tile; primer generally required on EIFS and metal	Balanced adhesive strength with good recovery; unprimed adhesion to glass, alodine and anodized aluminum, EIFS, vinyl, plastics and many paints; primer generally required on concrete and masonry	High movement capability; reduces long-term residue rundown on metal panels and reflective glass; reduces staining on sensitive porous substrates, such as granite, sandstone, marble, travertine and limestone; unprimed adhesion to most glass, brick, granite, alodine aluminum, stainless steel and most fluoropolymer coatings, including <i>Kynar</i> ® <sup>1</sup>	Exceptionally high movement capability; low bondline stress; outstanding unprimed adhesion to granite, most concrete and masonry, including brick and ceramic tile, and most glass; primer generally required on EIFS and non-porous substrates	High movement capability; outstanding tear strength; excellent unprimed adhesion to a wide variety of construction materials and building components, including granite, most glass, alodine and anodized aluminum, steel, plastics, most paints and fluoropolymer coatings, including <i>Kynar</i>	High movement capability; structural glazing as well as weatherproofing capability from a single product; excellent unprimed adhesion to a wide variety of construction materials and building components, including EIFS, granite, alodine and anodized aluminum, most glass, plastics and many paints, including most <i>Kynar</i>
Primary Applications	Sealing tilt-up and other concrete and masonry wall joints, and EIFS joints	Sealing dynamically moving joints such as expansion and control and EIFS joints; frame-to-structure and perimeter weathersealing	Sealing expansion and control, metal panel and curtainwall joints, and joints between natural stone; perimeter weathersealing around window frames	Sealing expansion and control, precast concrete panel, EIFS, curtainwall and mullion joints, stone pavers and many other high-movement construction joints	Sealing expansion, connection, perimeter and other movement joints	Structural and nonstructural glazing; structural attachment of panel systems; panel stiffener applications; weathersealing most common construction materials
Durometer Hardness, ASTM D-412, Shore A	15	25	30	15	30	35
Ultimate Tensile Strength, ASTM D-412, psi	100	140	200	100	120	180
Ultimate Elongation, ASTM C-1135, %	1,600	550	1,200	1,600	460	500
Movement Capability, ASTM C-719, %	±50	±40	±50	-50/+100	±50	±50
Peel Strength, ASTM C-794, pli	25	25	25	25	30	32
Staining, ASTM C-510	No staining on concrete and masonry, including brick	No staining on concrete and masonry, including brick	No staining/migration on granite, limestone, sandstone and white marble	No staining on concrete, granite, limestone, masonry and many marble substrates	No staining on granite and limestone	No staining on concrete, granite, limestone, masonry and many marble substrates
ASTM C-920 Classifications	Type S, Grade NS, Class 50, Uses T, NT, M, G, A, O	Type S, Grade NS, Class 35, Uses NT, M, G, A, O	Type S, Grade NS, Class 50, Uses NT, M, G, A, O	Type S, Grade NS, Class 50/100, Uses T, NT, M, G, A, O	Type S, Grade NS, Class 50, Uses NT, M, G, A	Type S, Grade NS, Class 50, Uses NT, M, G, A, O
Volatile Organic Content, g/L	22	35	75	39	46	28
SWRI Validation	Yes	Yes	Yes	Yes	Yes	Yes
Free Technical Support	Basic	Basic	Comprehensive	Comprehensive	Comprehensive	Comprehensive
Warranties Available	Weatherseal Limited Warranty <sup>2</sup>	Weatherseal Limited Warranty <sup>2</sup>	Weatherseal Limited Warranty <sup>2</sup> Non-Staining Limited Warranty <sup>3</sup>	Weatherseal Limited Warranty <sup>2</sup> Non-Staining Limited Warranty <sup>3</sup>	Weatherseal Limited Warranty <sup>2</sup> Non-Staining Limited Warranty <sup>3</sup>	Weatherseal Limited Warranty <sup>2</sup> Structural Adhesion Limited Warranty <sup>3</sup> Non-Staining Limited Warranty <sup>3</sup>
(Warranty Period)	(5 years)	(5 years)	(20 years)	(20 years)	(20 years)	(20 years)
Standard, Stocked Colors	7	20	7	11	6	11
Special and Custom Colors Available	Yes	Yes	Yes	Yes	Yes	Yes
Packaging	Cartridges, sausages, pails	Cartridges, sausages, pails	Sausages, pails	Cartridges, sausages, pails	Cartridges, sausages, pails	Cartridges, sausages, pails
Use-By Date	12 months	12 months	12 months	12 months	12 months	12 months

<sup>1</sup>*Kynar* is a registered trademark of Atofina Chemicals, Inc.

<sup>2</sup>Prior field adhesion testing required.

<sup>3</sup>Prior lab testing by Dow Corning required.

# From a name you can trust.

Dow Corning is the global silicone technology leader with more than 60 years of silicone experience. Across the construction industry, worldwide, Dow Corning is known for high-performance products, reliable product supply, outstanding technical support and one of the best warranty programs in the business. It's a name you can trust.

For more information about economical, high-performance silicone alternatives to urethanes, go to **urethanebusters.com**.

- Consult our silicone vs. urethane competitive comparison guide
- Download product data sheets and specifications
- Obtain instructions on how to use the Paint and Seal application method to address paintability issues
- Learn more about quantity pricing for special colors
- Request a free copy of our comprehensive *Weatherproofing Specification Guide* binder and CD
- Access services, learning opportunities (including AIA/CES Lunch and Learn programs) and technical support

Cover images (from top to bottom): AV06268, AV04942, AV04940, AV04943

#### LIMITED WARRANTY INFORMATION – PLEASE READ CAREFULLY

The information contained herein is offered in good faith and is believed to be accurate. However, because conditions and methods of use of our products are beyond our control, this information should not be used in substitution for customer's tests to ensure that our products are safe, effective and fully satisfactory for the intended end use. Suggestions of use shall not be taken as inducements to infringe any patent.

Dow Corning's sole warranty is that our products will meet the sales specifications in effect at the time of shipment.

Your exclusive remedy for breach of such warranty is limited to refund of purchase price or replacement of any product shown to be other than as warranted.

**DOW CORNING SPECIFICALLY DISCLAIMS ANY OTHER EXPRESS OR IMPLIED WARRANTY OF FITNESS FOR A PARTICULAR PURPOSE OR MERCHANTABILITY.**

**DOW CORNING DISCLAIMS LIABILITY FOR ANY INCIDENTAL OR CONSEQUENTIAL DAMAGES.**

*Dow Corning* is a registered trademark of Dow Corning Corporation.

*We help you invent the future* is a trademark of Dow Corning Corporation.

©2004, 2007, 2009 Dow Corning Corporation. All rights reserved.

Printed in USA

AGP10111m

Form No. 63-1012E-01

**DOW CORNING**

*We help you invent the future.™*